

RAILWAY PARKING NOTES:
 THERE ARE 62 PARKING SPACES TOTAL.
 THE PARKING SPACES UNDER BUILDINGS A & B CAN ACCOMMODATE TWO (2) VEHICLES
 PARKED IN TANDEM, EXCEPT FOR THE END SPACES, WHICH CAN ONLY ACCOMMODATE ONE
 (1) VEHICLE.

ARCHITECT

504 Wilshire St.
 Key West, FL 33401
 PH: 305-282-1772
 FAX: 305-282-2482
 E-Mail: info@mbik2m.com
 Florida Registration No. 2300



STRUCTURAL ENGINEER



ELECTRICAL ENGINEER
 Electrical Engineering
 23760 Royalton Road
 Columbia Station, Ohio 44226

CIVIL ENGINEER

Richard J. Meek, P.E.
 Historic Tours of America
 201 Fern Street, Suite 207
 Key West, Florida 33405

MECHANICAL/PLUMBING ENGINEER

Carnegie Engineering Company
 5455 Broadview Road
 Cleveland, Ohio 44134

FIRE SUPPRESSION

Fred McGraw, Inc.
 8630 NW 58th Street
 Miami, FL 33166

Sheet:

**KEY WEST
 RAILWAY CONDOMINIUMS**
 TRUMBO ROAD, KEY WEST, FLORIDA 33040

Drawn By: SCW
 Project No: 02049
 Checked By: MS
 Scale: AS NOTED

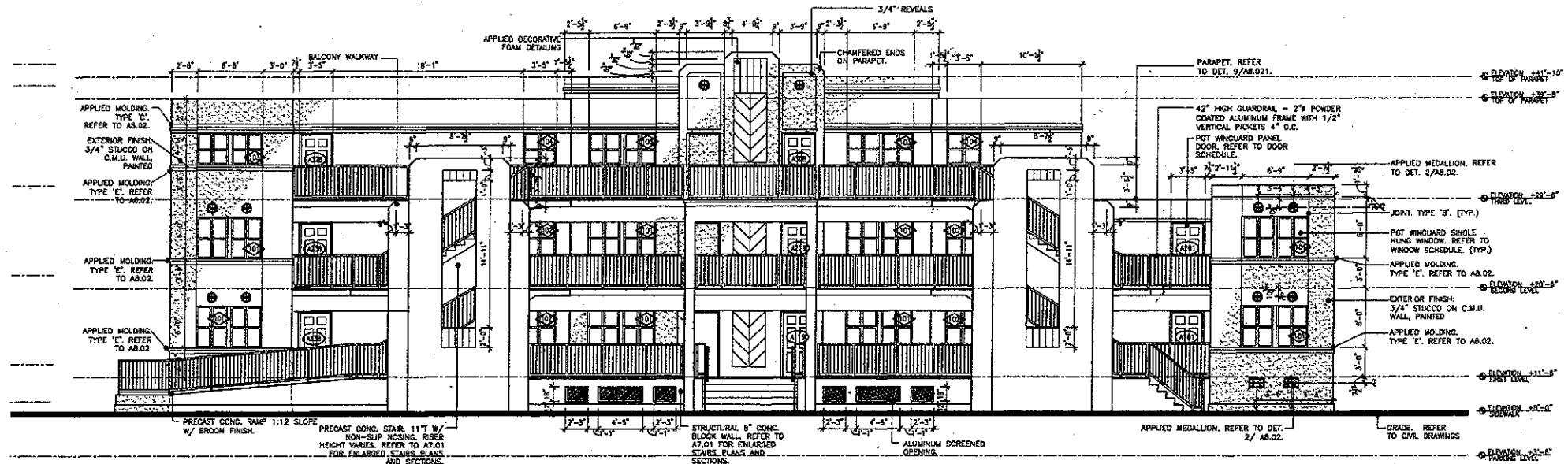
Revisions:
 Progress Set 10-20-2004
 Coordination Set 11-23-2004

Title:
**RAILWAY
 PARKING PLAN**

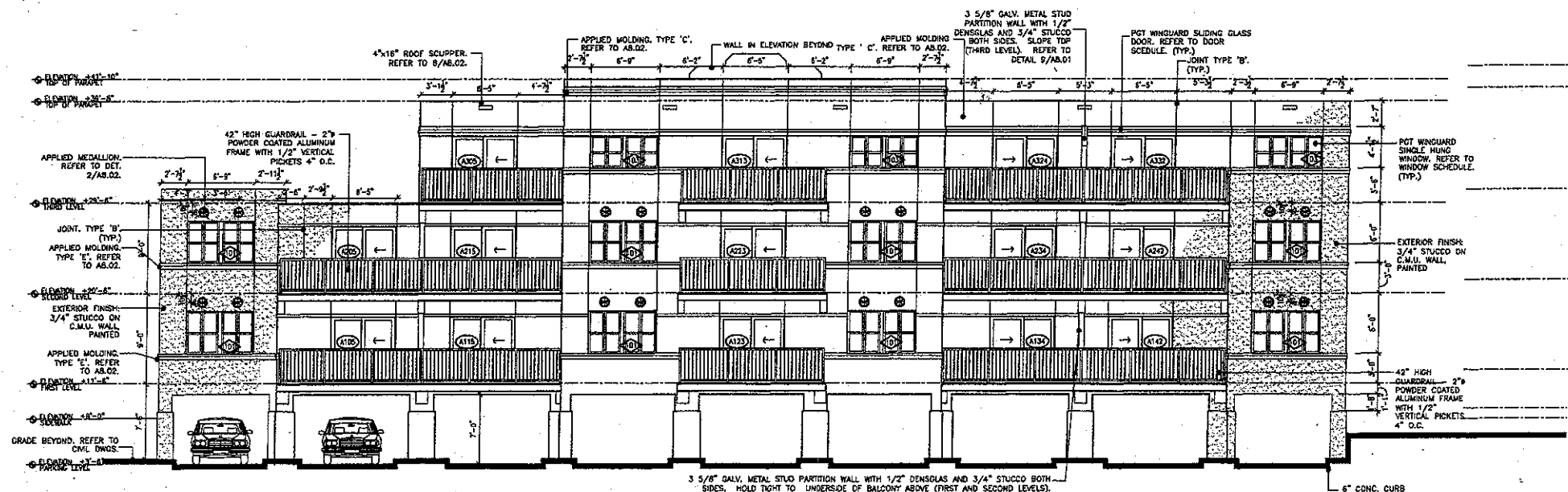
Sheet Number:

Date: April 05, 2004

RAILWAY PARKING PLAN



NORTH ELEVATION at BUILDING 'A'
 SCALE: 3/16" = 1'-0"



SOUTH ELEVATION at BUILDING 'A'
 SCALE: 3/16" = 1'-0"

APPLIED MOLDING TYPES	
A	APPLIED FOAM MOLDING
B	CONTROL JOINT
C	APPLIED FOAM MOLDING
D	APPLIED FOAM MOLDING
E	APPLIED FOAM MOLDING

NOTE: REFER TO 10/A8.02 FOR TYPICAL STUCCO DETAILING

NOTE: REFER TO 1/A8.02 FOR APPLIED MOLDING DETAILS AND DIMENSIONS.

NOTE: REVEAL LOCATION DIMENSIONS ARE FROM TOP OF MOLDING TO TOP OF REVEAL U.S.G.

ARCHITECT
mbi | k2m
 ARCHITECTURE, INC.
 1001 W. 10th St., Unit 101
 Key West, Florida 33504
 Tel. 305-293-1722
 Fax 305-292-2162
 www.mbi-k2m.com
 Prof. Reg. AA26001658

2530 Superior Avenue
 Suite #202
 Cleveland, Ohio 44114
 Tel. 216-357-2794
 Fax 216-357-2796

STRUCTURAL ENGINEER
NIELSEN
 ENGINEER
 10000 W. 13th St., Suite 100
 Overland Park, KS 66204
 Tel. 913-666-1125

ELECTRICAL ENGINEER
 Electrical Enlightenment
 28765 Roylton Road
 Columbia Station, Ohio 44025

CIVIL ENGINEER
 Richard J. Wink, P.E.
 Major's Tours of America
 201 Florin Street, Suite 207
 Key West, FL 33540
 Cert. of Authorization No. 26720

MECHANICAL/PLUMBING ENGINEER
 Carnegie Engineering Company
 5455 Broadview Road
 Cleveland, Ohio 44134

FIRE SUPPRESSION
 Fred McGivney, Inc.
 8600 NW 56th Street
 Miami, FL 33166

Scale:

RAILWAY
CONDOMINIUMS
 301, 303, 305 GRINNELL ROAD, KEY WEST, FLORIDA 33540

Drawn By: SSM
 Checked By: HSP
 Project No. 09049
 Scale: AS NOTED

Revisions:
 Progress Set - 20.04.04
 Coordination Set - 23.04.04

Revised Permit
 Document Issue - 18.Jan.05

Revised Permit
 Document Issue - 10.Mar.05

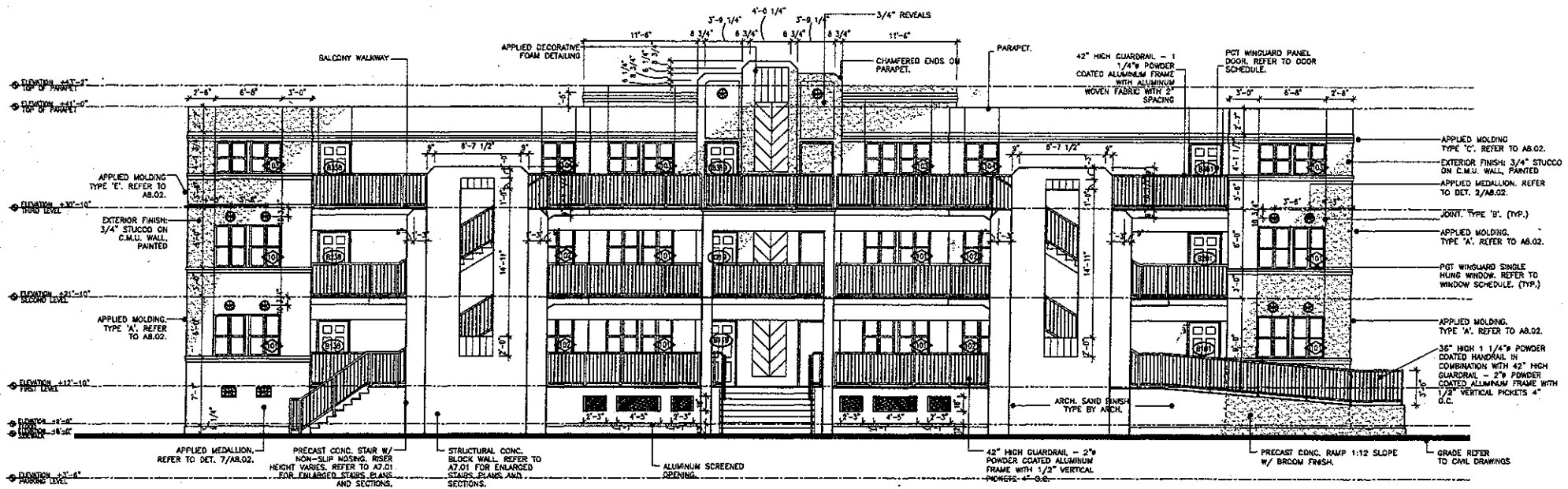
Field Clarification
 04.May.05

Value Engineering
 Modifications 31.Jan.06

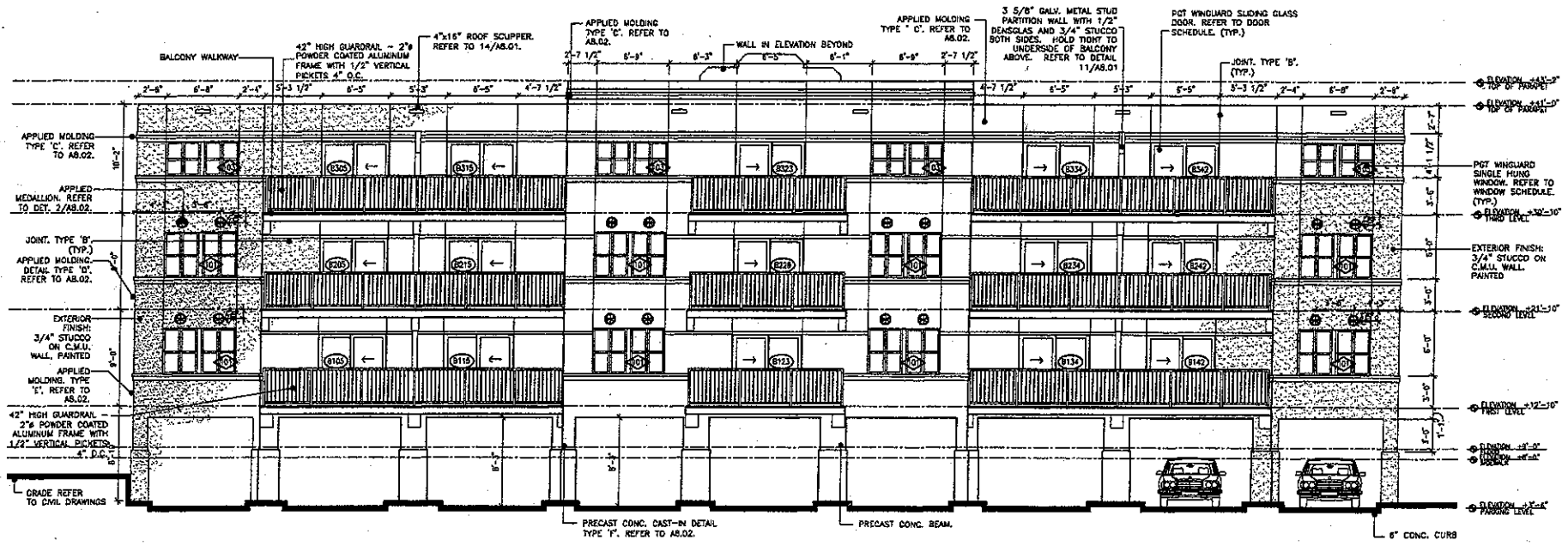
VE Modifications
 11.October.06

BUILDING 'A'
 TYPE:
BUILDING ELEVATIONS

Sheet Number:
A3.01
 Date: January 31, 2008



NORTH ELEVATION at BUILDING 'B'
 SCALE: 3/16" = 1'-0"



SOUTH ELEVATION at BUILDING 'B'
 SCALE: 3/16" = 1'-0"

APPLIED MOLDING TYPES	
A	APPLIED FOAM MOLDING
B	CONTROL JOINT
C	APPLIED FOAM MOLDING
D	APPLIED FOAM MOLDING
E	APPLIED FOAM MOLDING

NOTE: REFER TO 10/AB.02 FOR TYPICAL STUCCO DETAILING

NOTE: REFER TO 1/AB.02 FOR APPLIED MOLDING DETAILS AND DIMENSIONS.

NOTE: REVEAL LOCATION DIMENSIONS ARE FROM TOP OF MOLDING TO TOP OF REVEAL UNLESS NOTED OTHERWISE.

ARCHITECT
mbi | k2m
 ARCHITECTURE, INC.
 1001 Whitehead St., Unit 101
 Key West, Florida 33040
 Tel: 305-292-7722
 Fax: 305-292-2182
 www.mbi-k2m.com
 Prof. Reg. AA26001009

2830 Superior Avenue
 Suite #302
 Cleveland, Ohio 44114
 Tel: 216-657-0794
 Fax: 216-657-4796

STRUCTURAL ENGINEER
NIELSEN
 Structural Engineers
 10000 E. 12th Ave., Suite 200
 Denver, Colorado 80231

ELECTRICAL ENGINEER
 Electrical Engineering
 29795 Royalton Road
 Columbus Station, Ohio 44028

CIVIL ENGINEER
 Richard J. Miller, P.E.
 Historic Tours of America
 201 First Street, Suite 207
 Key West, FL 33040
 Cert. of Authorization No. 28120

MECHANICAL/PLUMBING ENGINEER
 Carnegie Engineering Company
 6163 Broadview Road
 Cleveland, Ohio 44134

FIRE SUPPRESSION
 Fred McElroy, Inc.
 8890 NW 56th Street
 Miami, FL 33156

RAILWAY
CONDOMINIUMS
 301, 303, 305 SPRANWELL ROAD, KEY WEST, FLORIDA 33040

Drawn By: scm
 Project No: 030406
 Revisions:
 Progress Set - 20.Oct.04
 Coordination Set - 23.Nov.04

Checked By: scm
 Scale: AS NOTED
 All NOTED

Permitted Plans - 18.Jan.05
 Replaced Plans - 10.May.05
 Value Engineering Modifications - 31.Jan.06
 VS Modifications - 11.October.06

BUILDING 'B'
 TITLE: BUILDING ELEVATIONS
 Sheet Number: **A3.01**
 Date: January 31, 2006

ARCHITECT
mbi | k2m
 A ARCHITECTURE, INC.
 1001 Whitehead St., Unit 101
 Key West, Florida 33040
 Tel: 305-292-7722
 Fax: 305-292-0182
 URL: www.mbi-k2m.com
 Prof. Reg. AA26001050

2530 Euclid Avenue
 Suite #302
 Cleveland, Ohio 44114
 Tel: 216-387-2794
 Fax: 216-387-1796

STRUCTURAL ENGINEER
NIELSEN
 Structural Engineers
 20000 N.W. 27th Ave., Suite 200
 Coral Gables, Florida 33134
 Tel: 305-443-8800

ELECTRICAL ENGINEER
 Electrical Engineering
 26765 Royalton Road
 Columbus Station, Ohio 43024
 Tel: 614-891-1100

CIVIL ENGINEER
 Richard J. Mihel, P.E.
 Historic Tours of America
 201 First Street, Suite 207
 Key West, FL 33040
 Cert. of Authorization No. 28120

MECHANICAL/PLUMBING ENGINEER
 Carnegie Engineering Company
 6455 Broadview Road
 Cleveland, Ohio 44134

FIRE SUPPRESSION
 Fred McSherry, Inc.
 8800 NW 58th Street
 Miami, FL 33168

Scale

**RAILWAY
 CONDOMINIUMS**
 301, 303, 305 GRINNELL ROAD, KEY WEST, FLORIDA 33040

Drawn By: SCM
 Checked By: AM
 Project No: 02040
 Scale: AS NOTED

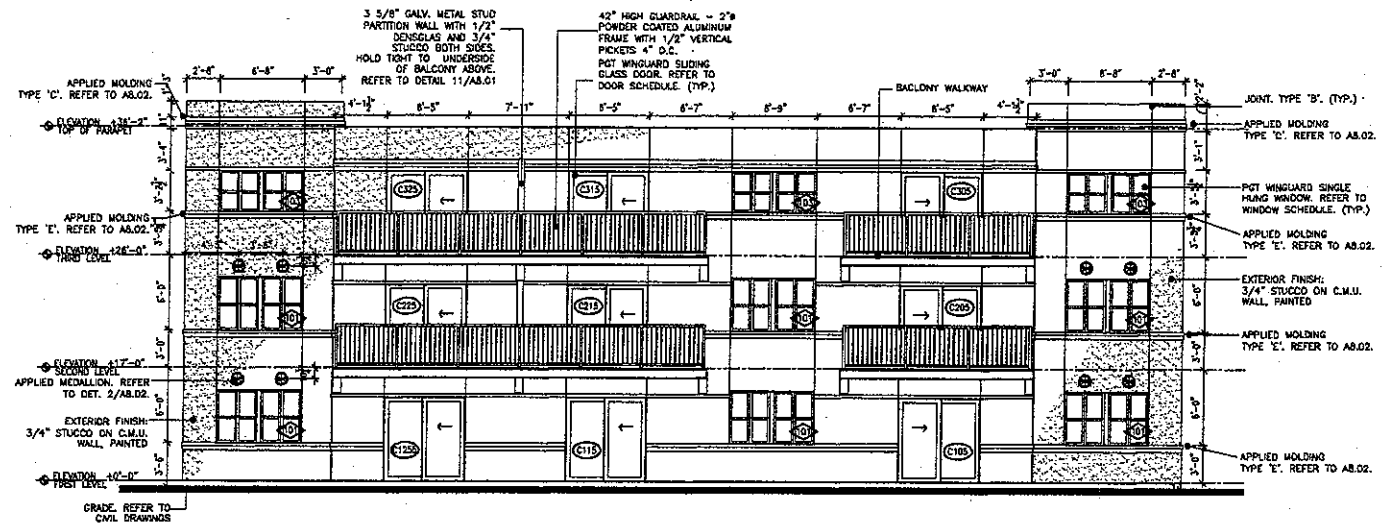
Revisions:
 Progress Set - 20/02/04
 Coordination Set - 23/Nov/04

- ▲ Revised Permit
- ▲ Document Issue - 18/Jan/05
- ▲ Revised Permit
- ▲ Document Issue - 18/Mar/05
- ▲ Field Observations
- DC/May/05
- ▲ Value Engineering
- Modifications 21/Jan/06
- ▲ VE Modifications
- 11/October/06

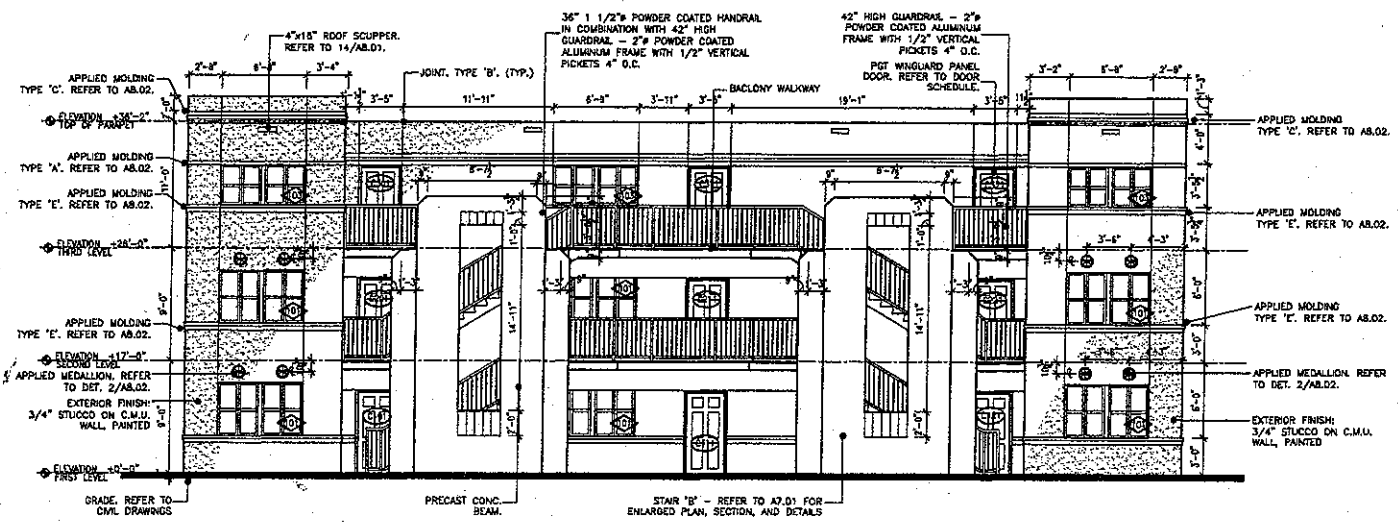
BUILDING 'C'

Title:
BUILDING ELEVATIONS

Sheet Number:
A3.01
 Date: January 31, 2006



2 NORTH ELEVATION at BUILDING 'C'
 SCALE: 3/16" = 1'-0"



1 SOUTH ELEVATION at BUILDING 'C'
 SCALE: 3/16" = 1'-0"

APPLIED MOLDING TYPES	
A	APPLIED FOAM MOLDING
B	CONTROL JOINT
C	APPLIED FOAM MOLDING
D	APPLIED FOAM MOLDING
E	APPLIED FOAM MOLDING

NOTE: REFER TO 10/AB.02 FOR TYPICAL STUCCO DETAILING

NOTE: REFER TO 1/AB.02 FOR APPLIED MOLDING DETAILS AND DIMENSIONS.

NOTE: REVEAL LOCATION DIMENSIONS ARE FROM TOP OF MOLDING TO TOP OF REVEAL LEN.G.